

Grade
1

Real music using only the first octave!

FULL CONDUCTOR SCORE

Catalog No: 023-4532-01

2 Minutes To Christmas

Arranged by
David Shaffer

Sound
Foundations
Series

FOR BEGINNING BANDS!



C.L. BARNHOUSE COMPANY®

Music Publishers • Oskaloosa, IA, 52577

www.barnhouse.com

Sound Foundations Series

(Grade levels 1/2 - 1)

The Sound Foundations Series is carefully designed and written to serve the performance needs of the beginning band program. In addition to providing quality performance literature for your concert program, each title in the series provides an appropriate musical setting for the conductor/teacher to reinforce musical concepts and skills that have been addressed in the first year of instruction. Written at two grade levels (1/2 and 1), the Sound Foundations Series provides a variety of musical works that employ the note and rhythm sequence used in most band method books. The Sound Foundations Series is a sound fundamental approach laying the foundation for a sound future.

2 Minutes To Christmas

**Arranged by
David Shaffer**

Instrumentation

Full Conductor Score	1
Flute	10
Oboe	2
B♭ Clarinet	12
B♭ Bass Clarinet.....	2
Bassoon	2
E♭ Alto Saxophone	8
B♭ Tenor Saxophone	2
E♭ Baritone Saxophone	2
B♭ Trumpet	10
F Horn	4
Trombone/Baritone B.C.	8
Baritone T.C.	2
Tuba	4
Chimes	1
Bells	3
Timpani	1
Percussion 1: Snare Drum, Bass Drum, Slap Stick	3
Percussion 2: Sleigh Bells, Crash Cymbals, Tambourine	3
Piano/Keyboard (optional)	1

Program Notes

Opening with a percussive fanfare, this cleverly crafted medley includes "Ding Dong Merrily on High," "Pat a Pan," and what arrangement would be complete without a version of "Jingle Bells?" Unique percussive sounds bring the music alive with all of the spirit of the holiday season. And, as the title suggests, it can be played in exactly 2 minutes. Happy Holidays!

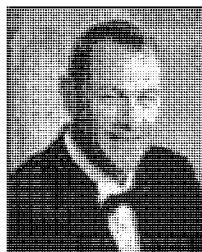
Rehearsal Suggestions

The opening fanfare should be bold and strong, emphasizing the percussion section's contributions. M. 11 begins "Ding Dong Merrily on High," with the melody alternating between woodwinds and brass. Save the climax of this section until the "ff" in m. 24. M. 28 begins the folk tune "Pat a Pan," which is a percussion and wind section duet. It is important to emphasize the tambourine and the snares-off snare drum. M. 47 begins the final tune in this medley, "Jingle Bells." If the arrangement is performed at the suggested tempo of quarter note = 132, the performance time will be exactly 2 minutes.

I hope you enjoy preparing and performing this clever holiday arrangement!

David Shaffer

About the Arranger



David Shaffer was born in Columbus, Ohio and attended Grove City High School, Grove City, Ohio. He holds a Bachelor Degree from the Ohio State University and a Master of Music Degree from Miami University (Ohio). Mr. Shaffer has taught in the Hamilton, Ohio; Northridge, Ohio; and Wyoming, Ohio schools. Mr. Shaffer has been associated with the Miami University Marching Band for 30 years as Graduate Assistant Director (1978-80),

Assistant Director (1980-97) and as Director (1997 – 2009). The Miami Band has performed for seven regional Bands of America Contests. In 2003 the Miami Band was selected as the "Santa Band" in the 77th annual Macy's Thanksgiving Day Parade in New York City.

In addition to his involvement with Miami University, Mr. Shaffer has over 400 compositions and arrangements in print. His compositions have been used at clinics and music festivals around the world and have been placed on contest required-performance lists in the United States, Canada, Europe, Australia, and Asia. Mr. Shaffer has been the recipient of the ASCAP Standard Award in Music Composition for 24 years.

Under the direction of Mr. Shaffer, the Wyoming High School String Orchestra performed as the opening group at the 1984 Mid-West National Band and Orchestra Director's Clinic in Chicago. Additional Mid-West conducting appearances were in 2000 and 2001 when Mr. Shaffer guest conducted his compositions with the Robinson School Band, Fairfax, Va., and the South Central Middle School Band, Cartersville, Ga.

Currently residing in Boston, Massachusetts, Mr. Shaffer is in demand as a conductor for honor bands, new music reading clinics, music festivals, and music education seminars. During the summer of 1986 and 1992, he served as instrumental director for the Saskatchewan School of Fine Arts. In February of 1997 he conducted a program of his music, with the China Youth Corps Band in the National Concert Hall, Taipei, Taiwan. In April of 2011 Mr. Shaffer premiered his composition At The Red Creek with the Musikkapelle Roethenbach, at Roethenbach, Germany.

New Young Band CD



WFR393

BLAZE!

The Washington Winds, Edward Petersen - Conductor

CONTENTS: Rejoice! (Swearingen), Celtic Lullaby (arr. Phillips), American Legion March (Parker/arr. Glover), Blaze! (Romeyn), Ancient Conquest (Coles), The Red Sled (Fossa), A Time To Reflect (Swearingen), Woodwinds Of Mass Destruction (Conaway), Chimes Of Freedom (R.W. Smith), At Peace (Conaway), Interstellar Fanfare (J. McBride), Kartoon Classics (Shaffer), Amber Skies (J. McBride), Missa Festi: Music for a Festival (Shaffer), And To The Republic: Concert March (Huckeby), Musical Mayhem (R.W. Smith), Promise Of Tomorrow (P. Clark), Blessings (R.W. Smith), Into The Court Of The King (Romeyn), Flutitude (Neeck), Long Day's Journey: A Triumphant Return (Swearingen), Daydreams (Romeyn), First Decree (R.W. Smith), March A Doodle Dandy (Shaffer), Waltz Of The Wraiths (Conaway), Alien Crossfire (J. McBride), Chorale & Fugue in F (Bach/Daehn)

2 MINUTES TO CHRISTMAS

Conductor Score
023-4532-00

David Shaffer
(ASCAP)

Brightly ♩ = 132

This is a conductor score for the piece "2 Minutes to Christmas" by David Shaffer. The score is written for a full orchestra and includes parts for the following instruments:

- Flute
- Oboe
- B♭ Clarinet
- B♭ Bass Clarinet
- Bassoon
- E♭ Alto Saxophone
- B♭ Tenor Saxophone
- E♭ Baritone Saxophone
- B♭ Trumpet
- F Horn
- Trombone/Baritone
- Tuba
- Chimes
- Bells
- Timpani
- Percussion 1 (Snare Drum, Bass Drum, Slap Stick)
- Percussion 2 (Sleigh Bells, Crash Cymbals, Tambourine)
- Piano/Keyboard (optional)

The score is in 4/4 time with a key signature of two flats (B♭ and E♭). The tempo is marked "Brightly" with a quarter note equal to 132 beats per minute. The dynamic markings include *f* (forte) and *mf* (mezzo-forte). The score is divided into measures, with measure numbers 2, 3, 4, 5, and 6 indicated at the bottom. A large watermark "For reference only. Not valid for performance." is overlaid diagonally across the score.

© 2017 Birch Island Music Press (ASCAP), PO Box 680, Oskaloosa, IA 52577 International Copyright Secured.
All rights Reserved. Printed In U.S.A.

WARNING! This composition is protected by copyright law. To copy or reproduce it by any method is an infringement of the copyright law.

Flute *ff* *mf*

Oboe *ff* *f*

Clar. *ff* *mf* *f*

B. Clar. *ff* *f*

Bsn. *ff* *f*

A. Sax. *ff* *mf*

T. Sax. *ff* *f*

B. Sax. *ff* *f*

Trpt. *ff* *f*

Horn *ff* *f*

Trom/Bari *ff* *f*

Tuba *ff* *f*

Chim. *ff* *f*

Bells *ff* *f*

Timp. *ff* *f*

Perc. 1 *ff* *mf* Snares on

Perc. 2 *ff* *mf* Cr. Cym.

Pno./Keyb (opt) *ff* *mf* *f*

7 8 9 10 11 12 13

Flute

Oboe

Clar.

B. Clar.

Bsn.

A. Sax.

T. Sax.

B. Sax.

Trpt.

Horn

Trom/Bari

Tuba

Chim.

Bells

Timp.

Perc. 1

Perc. 2

Pno./Keyb (opt)

28

32

Flute

Oboe

Clar.

B. Clar.

Bsn.

A. Sax.

T. Sax.

B. Sax.

Trpt.

Horn

Trom/Bari

Tuba

Chim.

Bells

Timp.

Perc. 1

Perc. 2

Tamb.

Pno./Keyb (opt)

f

mp

mf

f

28 29 30 31 32 33

Flute

Oboe

Clar.

B. Clar.

Bsn.

A. Sax.

T. Sax.

B. Sax.

Trpt.

Horn

Trom/Bari

Tuba

Chim.

Bells

Timp.

Perc. 1

Perc. 2

Pno./Keyb (opt)

34 35 36 37 38 39 40

Flute

Oboe

Clar.

B. Clar.

Bsn.

A. Sax.

T. Sax.

B. Sax.

Trpt.

Horn

Trom/Bari

Tuba

Chim.

Bells

Timp.

Perc. 1

Perc. 2

Pno./Keyb (opt)

48 49 50 51 52 53

Flute

Oboe

Clar.

B. Clar.

Bsn.

A. Sax.

T. Sax.

B. Sax.

Trpt.

Horn

Trom/Bari

Tuba

Chim.

Bells

Timp.

Perc. 1

Perc. 2

Pno./Keyb (opt)

54 55 56 57 58 59

Flute

Oboe

Clar.

B. Clar.

Bsn.

A. Sax.

T. Sax.

B. Sax.

Trpt.

Horn

Trom/Bari

Tuba

Chim.

Bells

Timp.

Perc. 1

Perc. 2

Pno./Keyb (opt)

60 61 62 63 64 65